



**BISAZZA**

**IL  
GIARDINO  
SEGRETO  
&  
other stories**

**CERSAIE 2018**



A floral installation  
inspired by the gardens  
of Marie Antoinette  
at the Petit Trianon

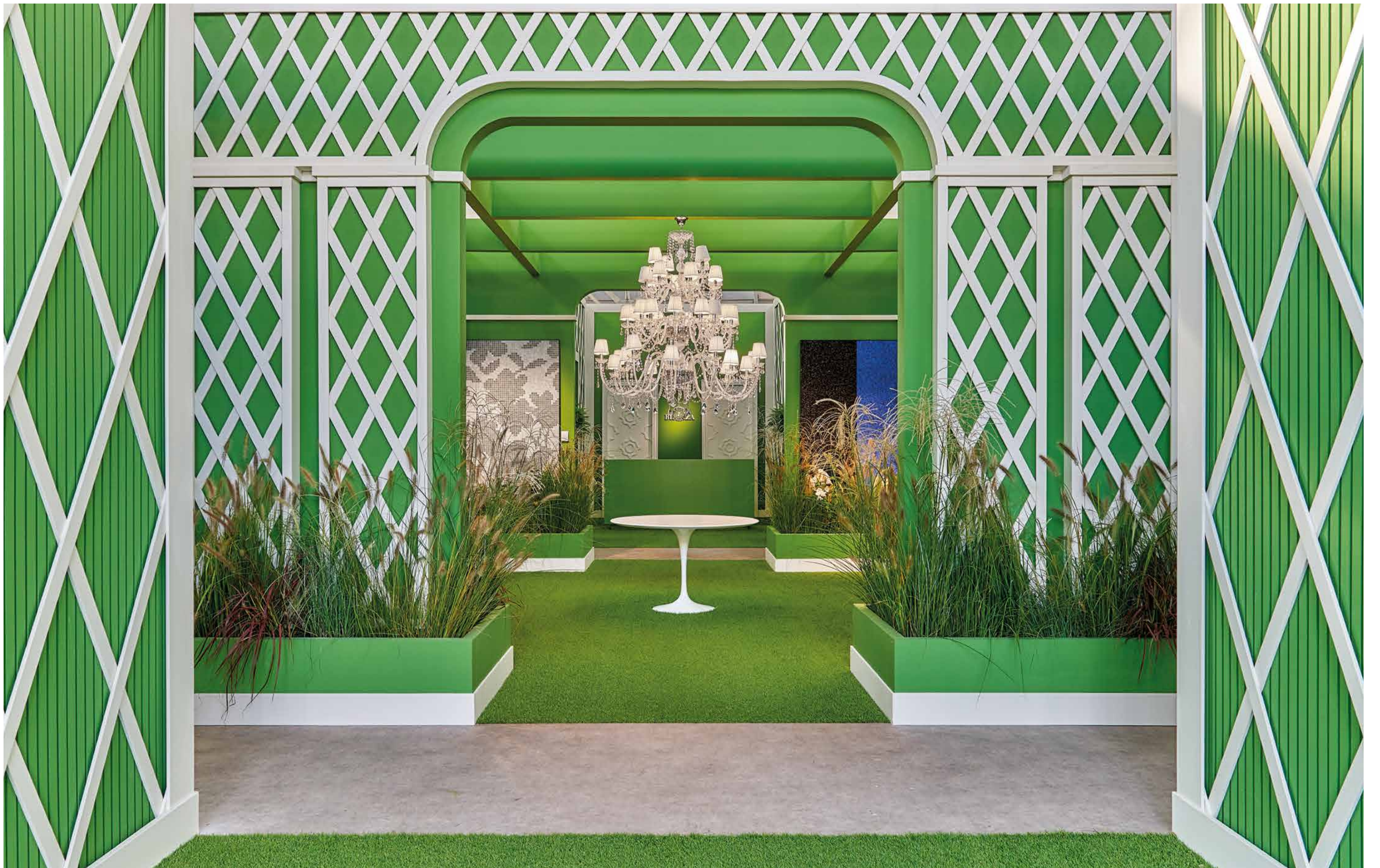
Mosaic works by  
Nendo,  
Kiki van Eijk,  
Tricia Guild,  
Tord Boontje,  
Carlo Dal Bianco,  
Marcel Wanders



The Crystal Collection II

Cementiles 10

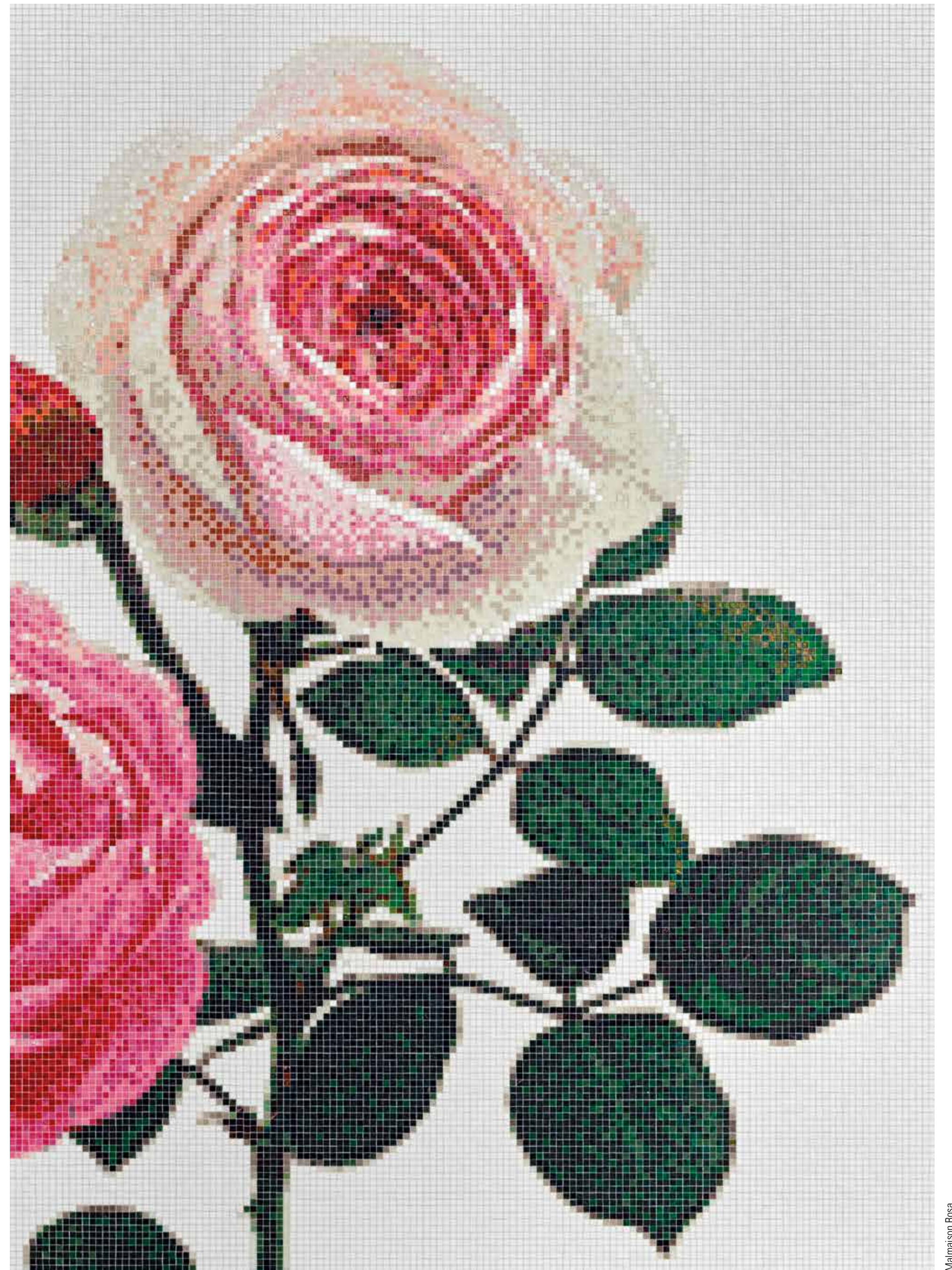
Collezione Smalto Mat





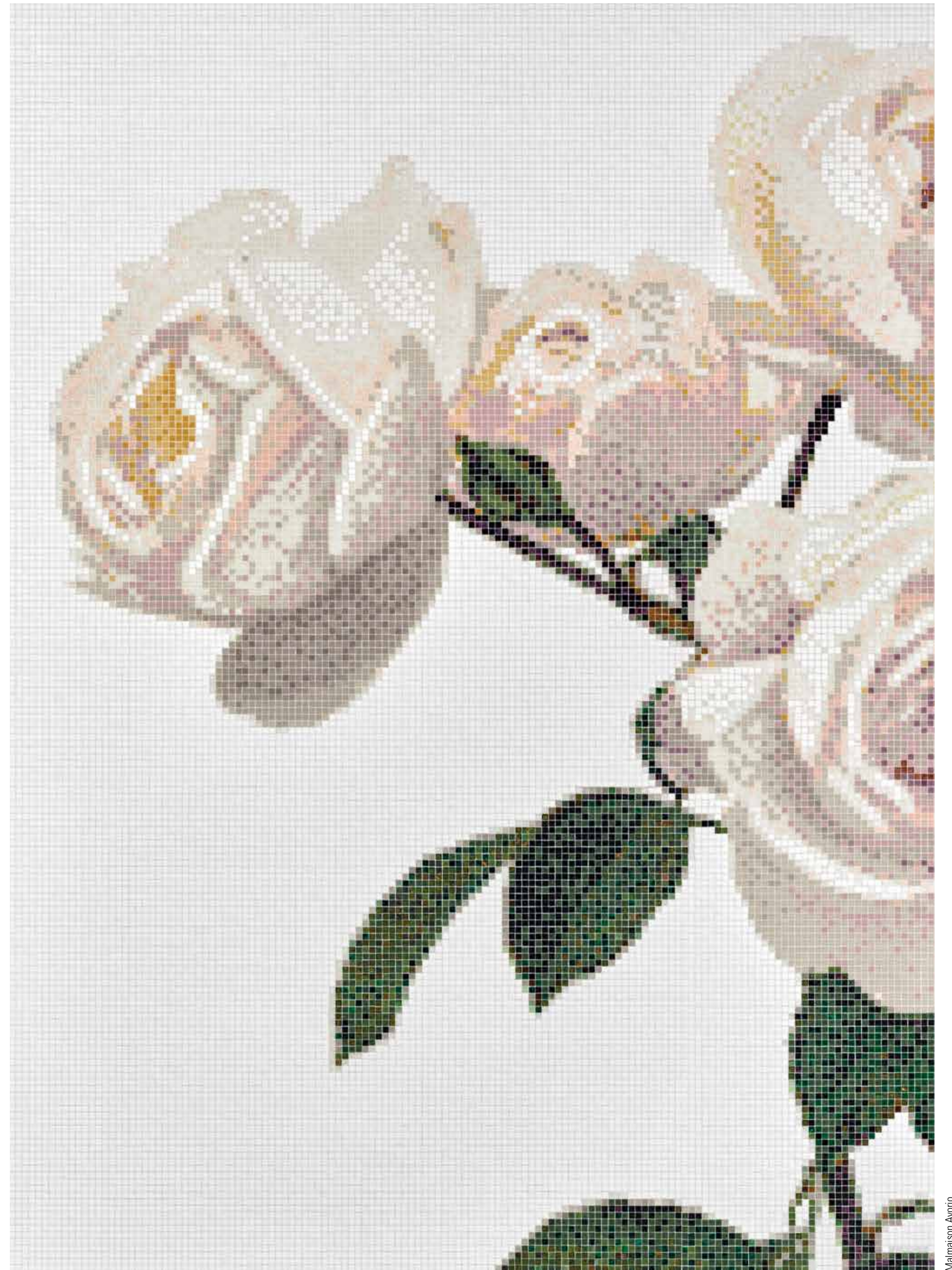






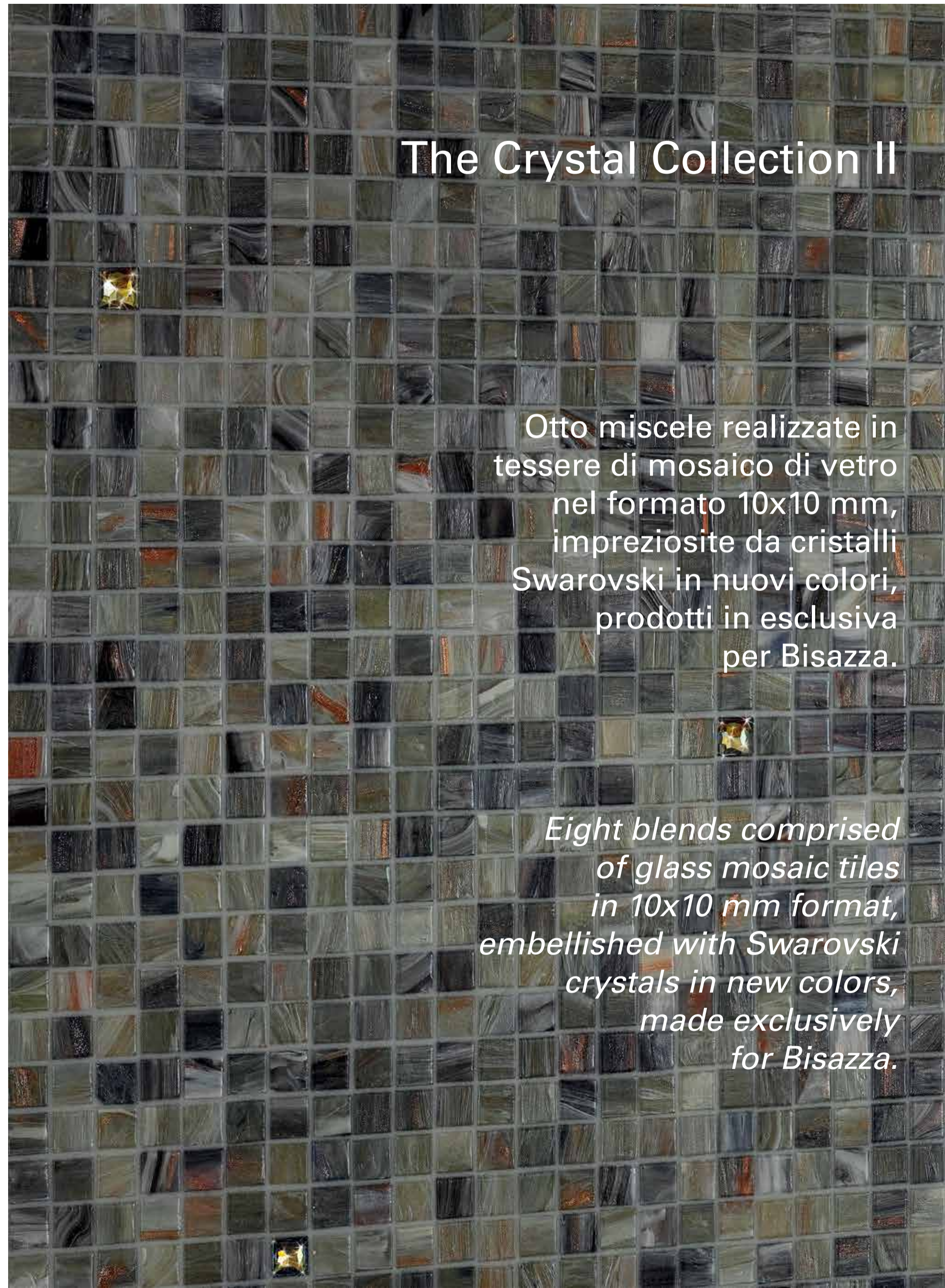
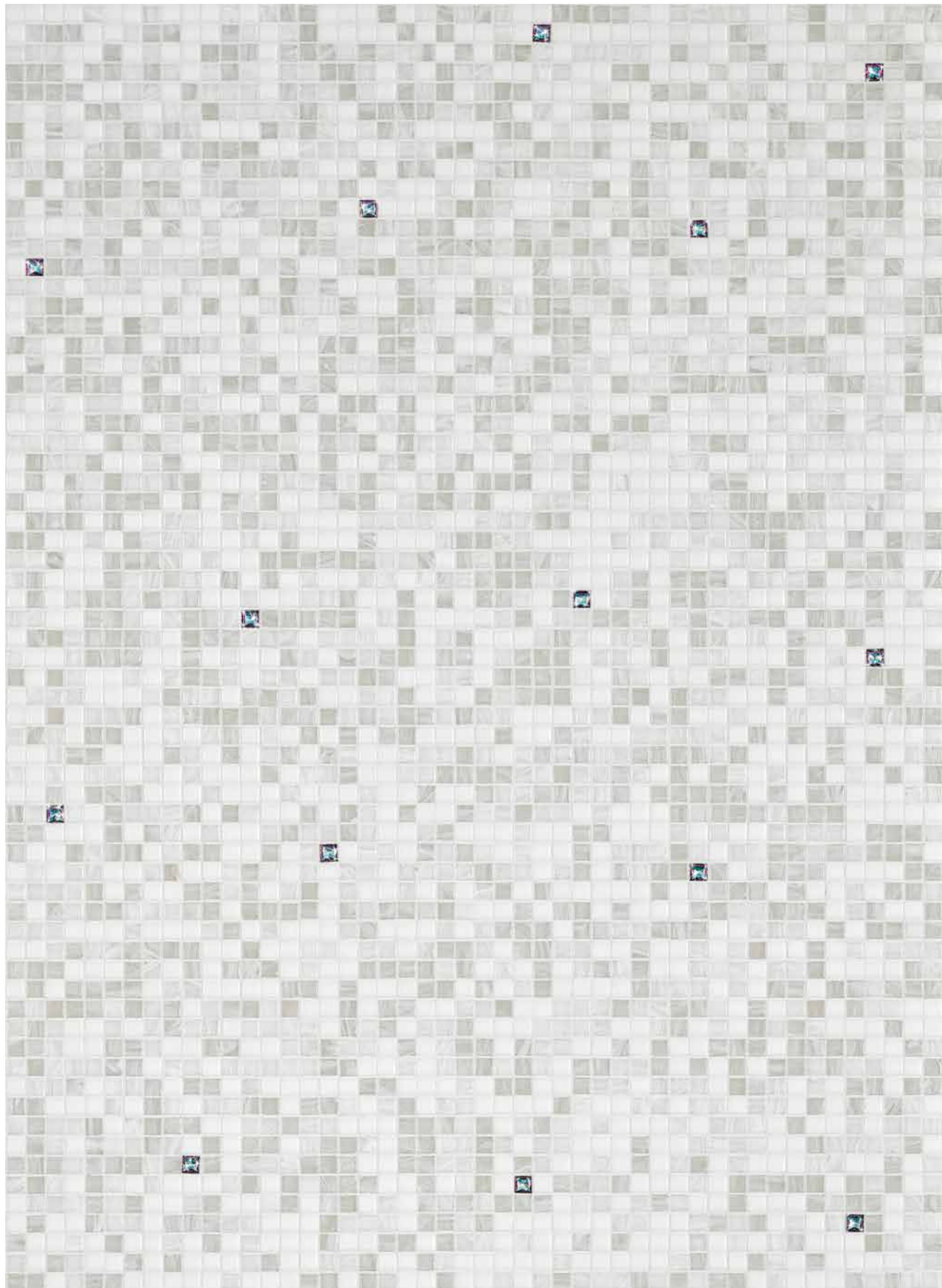


Louise Elisabeth Vigée-Lebrun, "Marie-Antoinette dit à la Rose" 1783





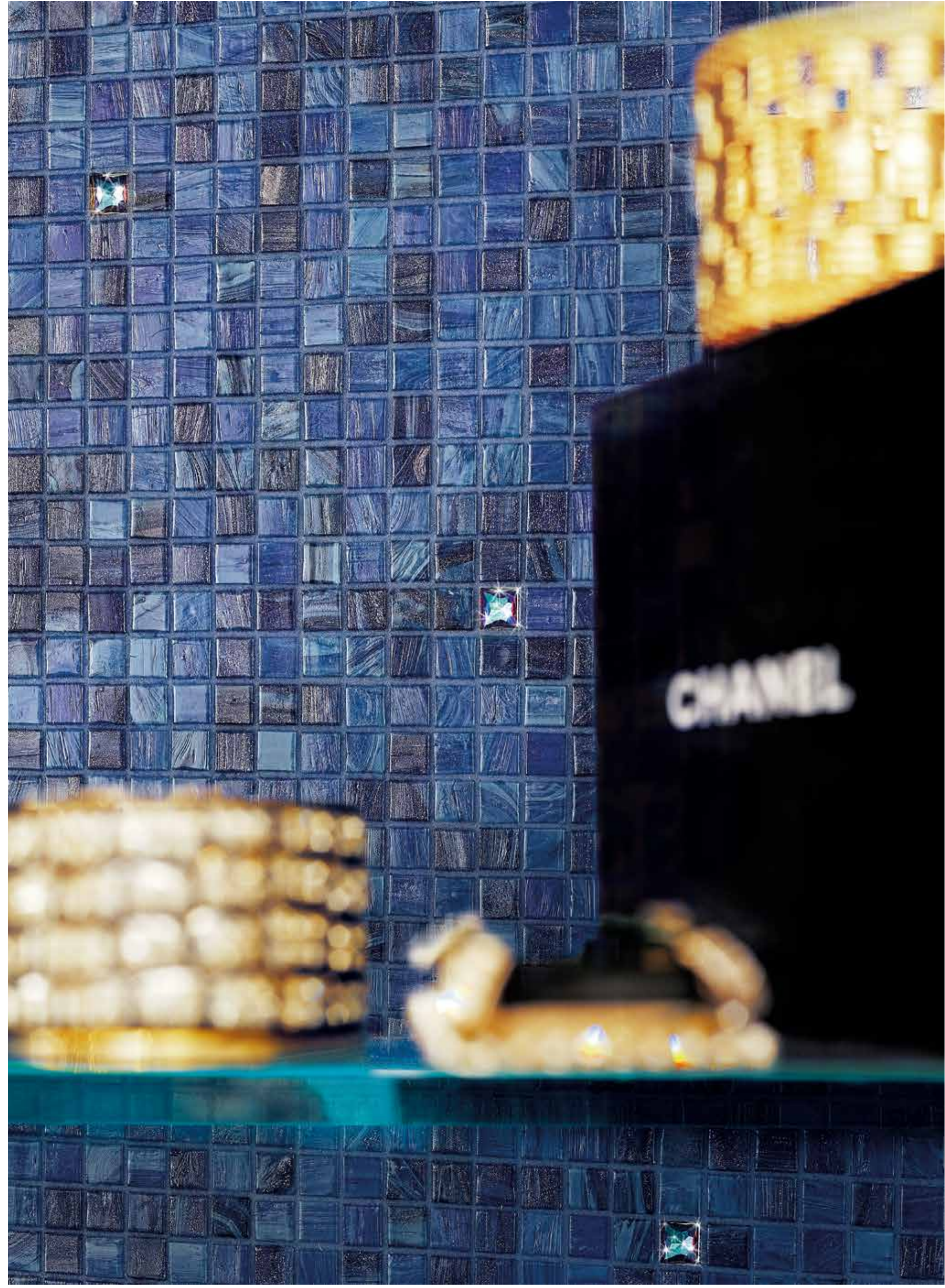
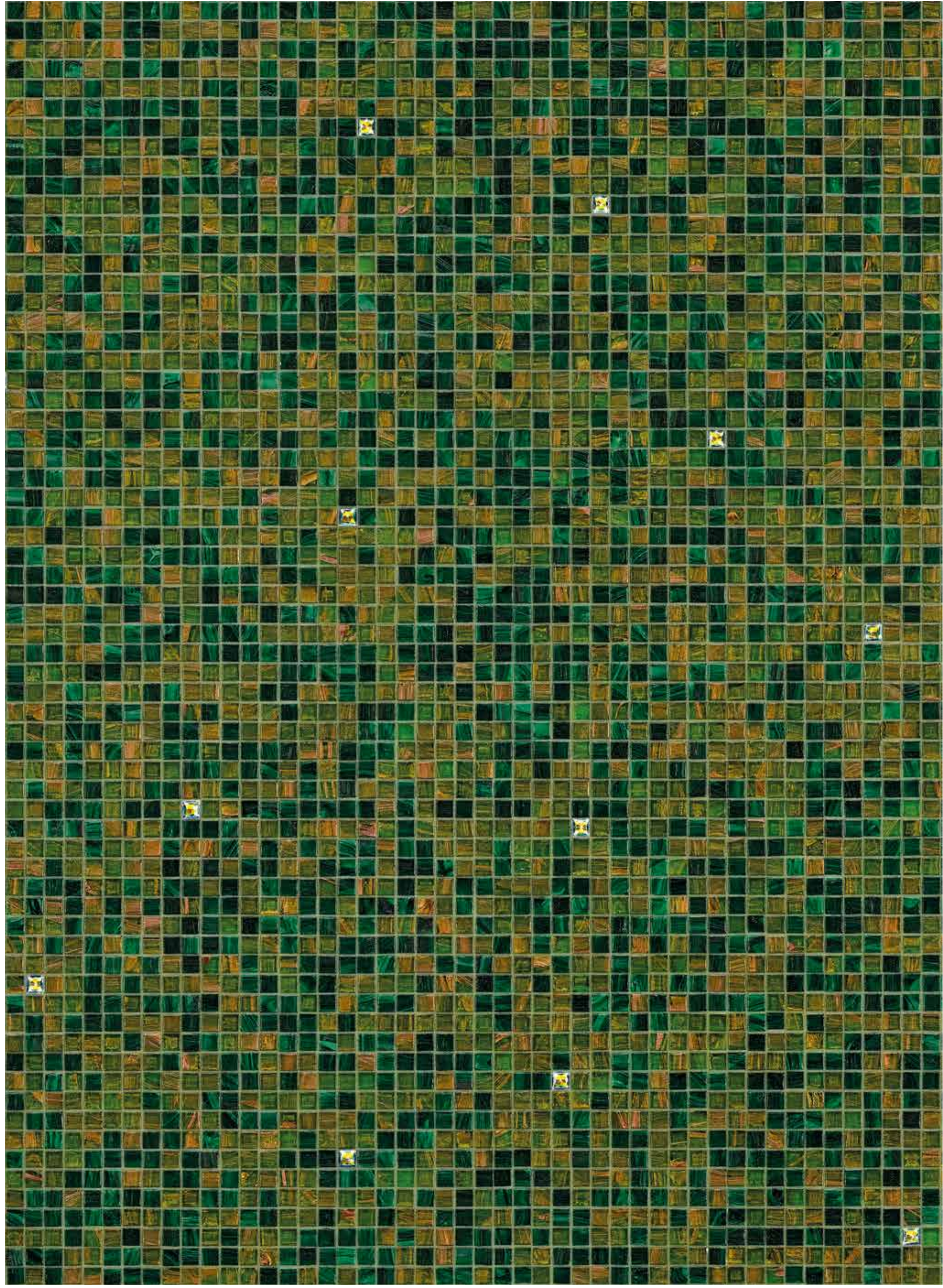


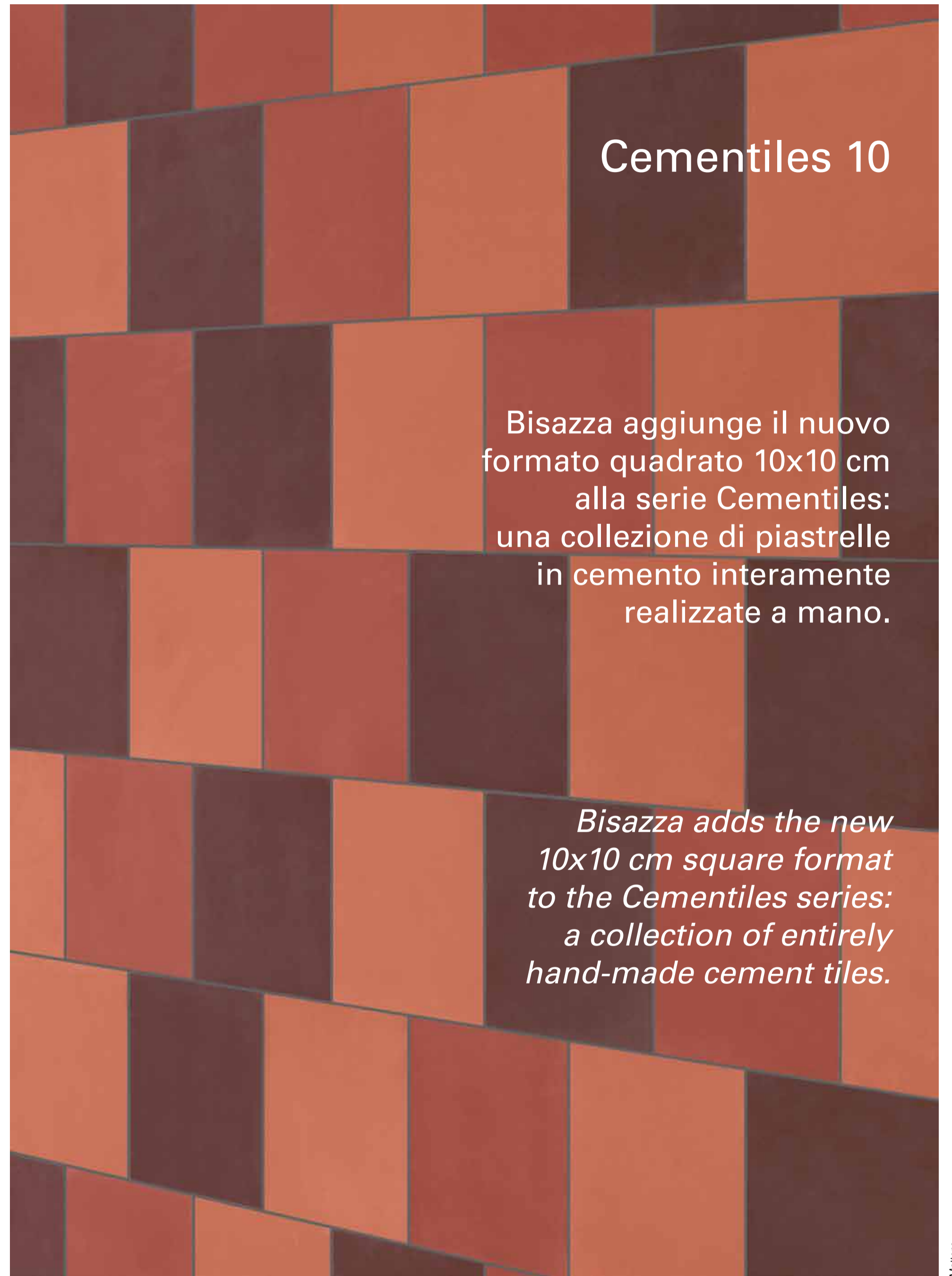


## The Crystal Collection II

Otto miscele realizzate in tessere di mosaico di vetro nel formato 10x10 mm, impreziosite da cristalli Swarovski in nuovi colori, prodotti in esclusiva per Bisazza.

*Eight blends comprised of glass mosaic tiles in 10x10 mm format, embellished with Swarovski crystals in new colors, made exclusively for Bisazza.*

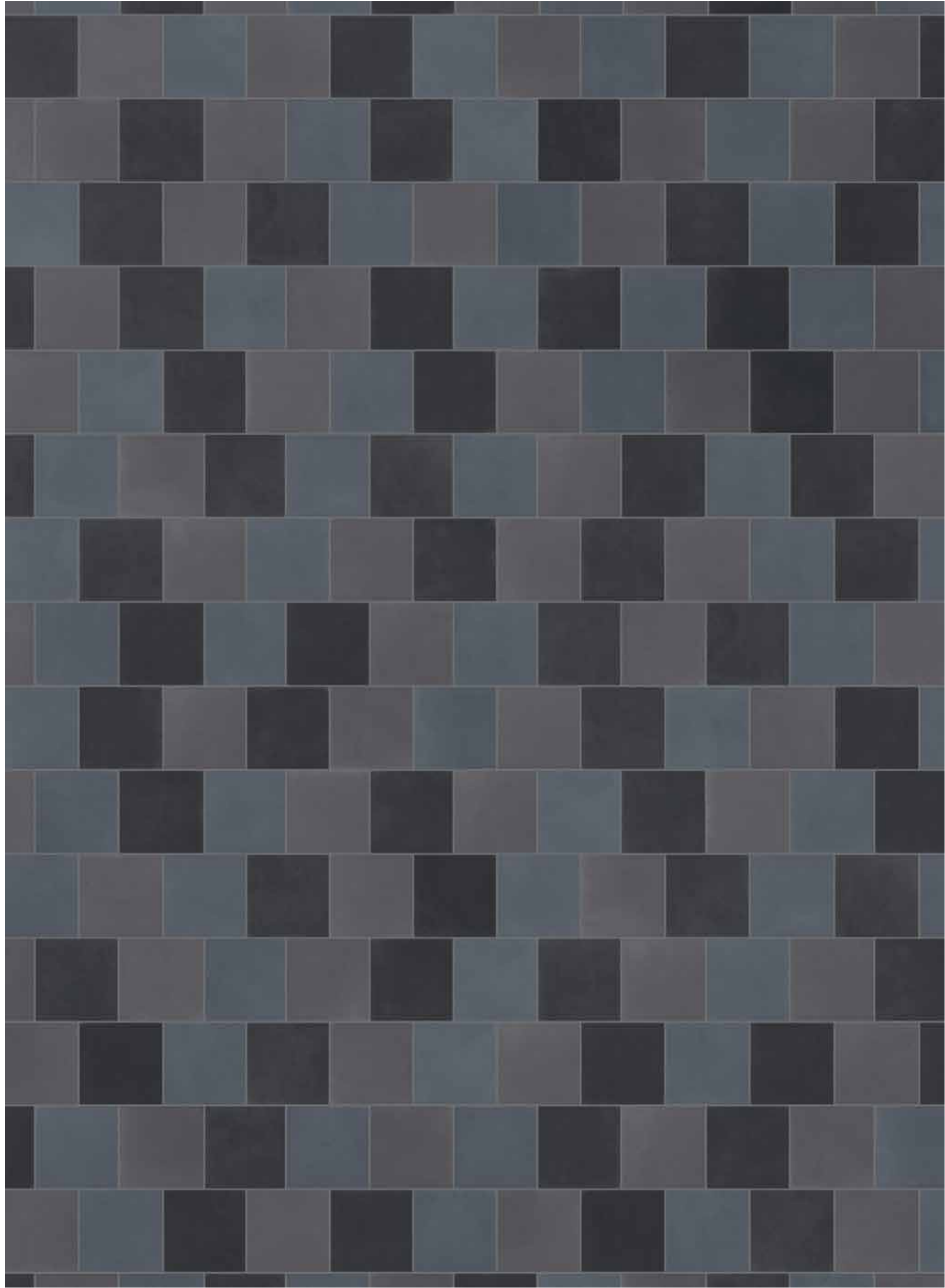


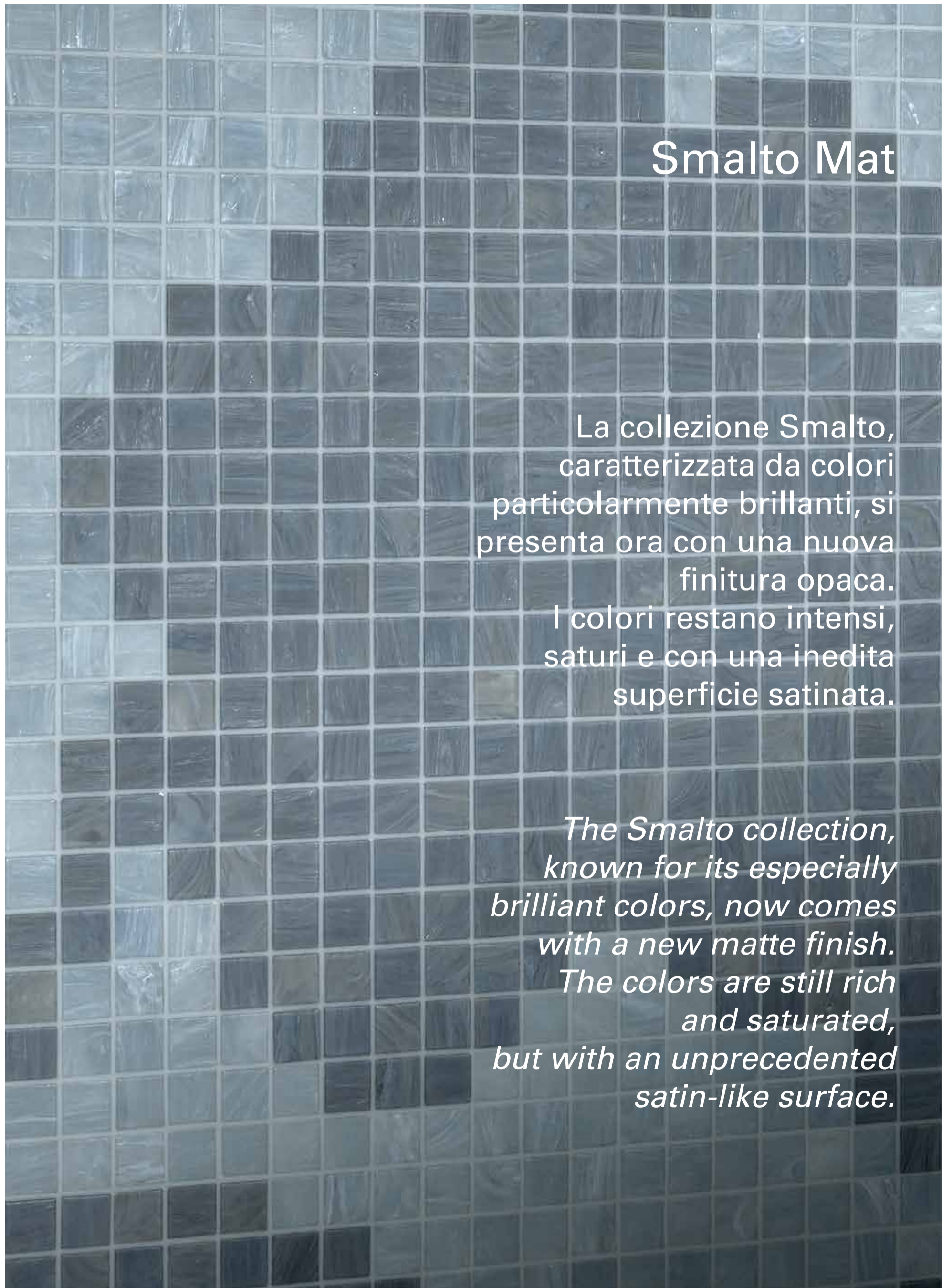


## Cementiles 10

Bisazza aggiunge il nuovo formato quadrato 10x10 cm alla serie Cementiles: una collezione di piastrelle in cemento interamente realizzate a mano.

*Bisazza adds the new 10x10 cm square format to the Cementiles series: a collection of entirely hand-made cement tiles.*





# Smalto Mat

La collezione Smalto, caratterizzata da colori particolarmente brillanti, si presenta ora con una nuova finitura opaca. I colori restano intensi, saturi e con una inedita superficie satinata.

*The Smalto collection, known for its especially brilliant colors, now comes with a new matte finish. The colors are still rich and saturated, but with an unprecedented satin-like surface.*



# The Mahdavi Bagno Collection

design India Mahdavi